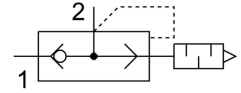


Quick exhaust valve VBQF-U-G14-E

Part number: 548001

FESTO



Data sheet

Feature	Value
Type code	VBQF-U
Valve function	Quick exhaust
Selection of additional function	With pneumatic muffler
Pneumatic connection 1	G1/4
Pneumatic connection 2	G1/4
Type of mounting	Screw-in
Standard flow rate exhaust 6->0 bar	2500 l/min
Standard nominal flow rate pressurization 6->5 bar	960 l/min
Operating pressure	0.5 bar ... 10 bar
Ambient temperature	-20 °C ... 80 °C
Housing material	Die-cast aluminum Die-cast zinc
Operating medium	Compressed air as per ISO 8573-1:2010 [7:4:4]
Nominal width	7 mm
Mounting position	Any
Symbol	00991460
Information on operating and pilot media	Operation with oil lubrication possible (required for further use)
Corrosion resistance class (CRC)	1 - Low corrosion stress
Temperature of medium	-20 °C ... 80 °C
Noise level	75 dB(A)
Product weight	226 g
Note on materials	RoHS-compliant
Seals material	NBR